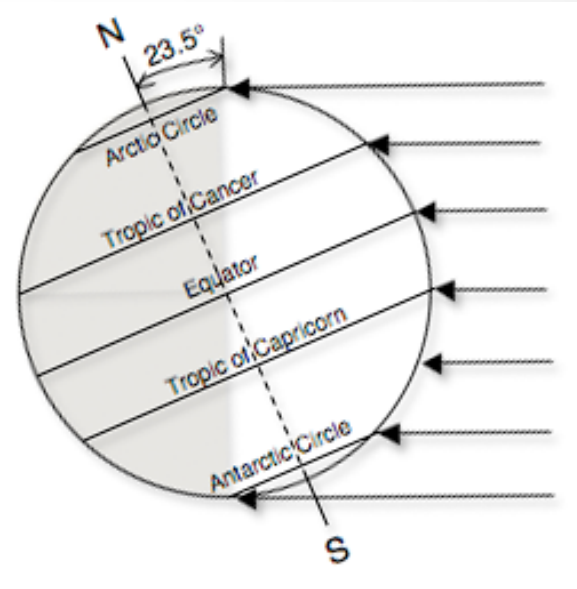
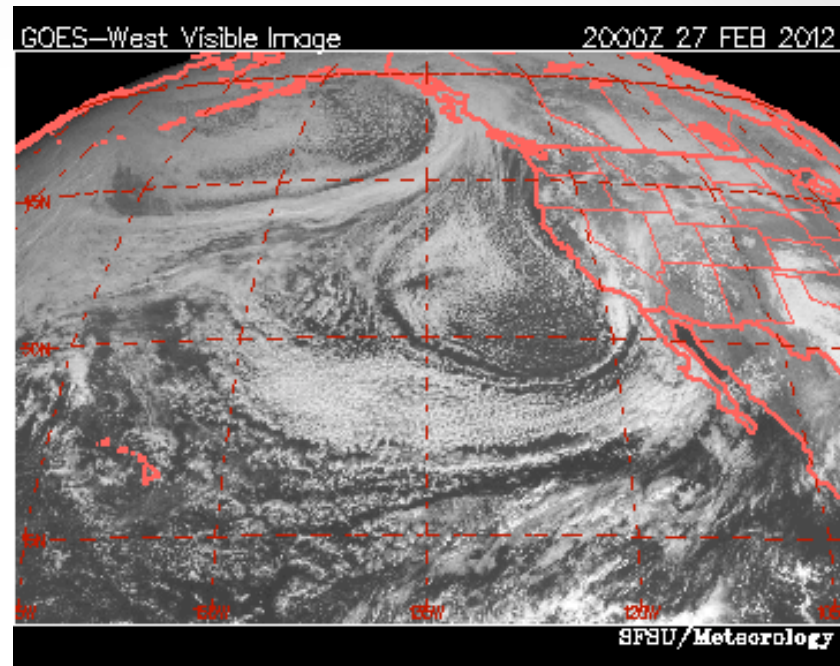


Which statement below is true about any place outside the tropics?



- (A) The average winter day is shorter than the average autumn day.
- (B) On the average, the sun angle at solar noon is lower in winter than in fall.
- (C) On the average, the sun angle at solar noon and the number of hours of daylight are the same in spring and in summer.

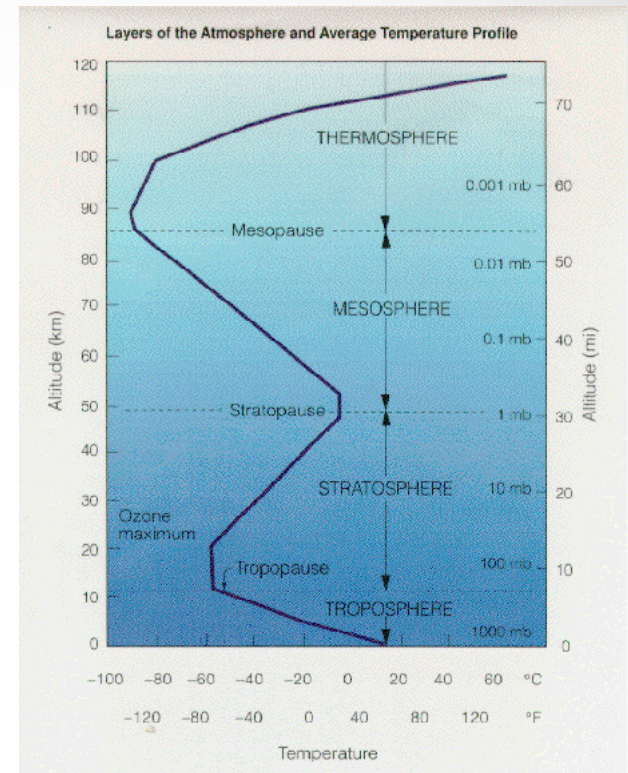
What do visible satellite images show?



- (A) the intensity of light striking features of the earth
- (B) the albedo of features of the earth
- (C) the intensity of light reflected by features of the earth
- (D) the intensity of infrared radiation emitted by features of the earth

# What is true about the troposphere?

- (A) air temperature usually decreases rapidly with increasing altitude, from sea level dropping by roughly 125°F (70°C)
- (B) its depth is roughly equal to the distance from SFSU to downtown S.F. (around 7 miles or 11 km)
- (C) it contains about 80% of all air molecules in the atmosphere
- (D) all of the above
- (E) none of the above—they all describe the stratosphere



What is a temperature inversion layer?

- (A) the ozone layer
- (B) a layer in which temperature increases with increasing altitude
- (C) a layer in which temperature and dew point temperature are the same
- (D) all of the above

